

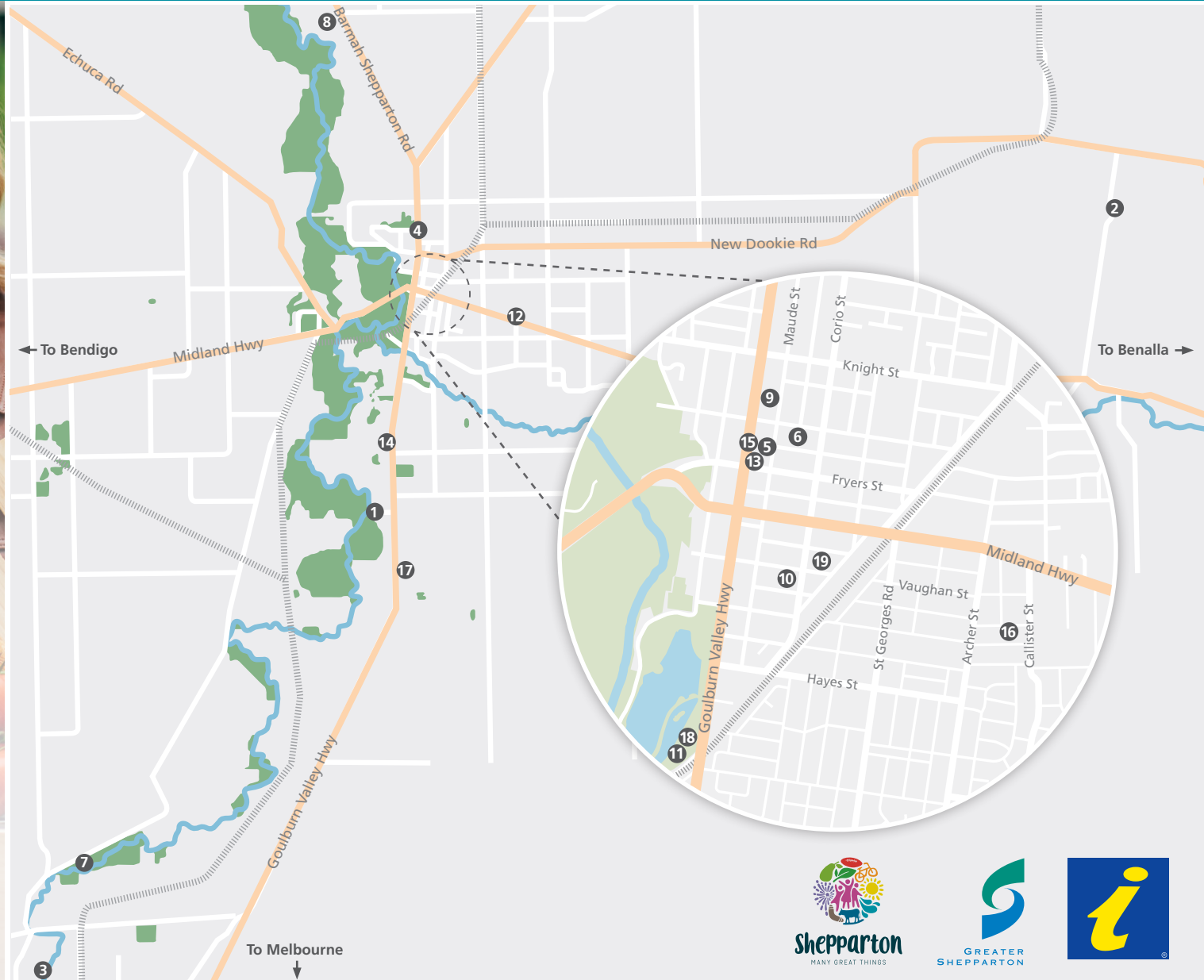
GREATER SHEPPARTON PRODUCERS & MAKERS

FIND THE THINGS CHYKA LOVES

There's never been a better time to venture to Greater Shepparton and reconnect with your family and friends, or discover your new favourite destination.



- | | |
|--|---|
| 1 Belstack Strawberry Farm | 12 Boris's Fruit Shed
Farm Gate - Cherries & Stone Fruits |
| 2 Tallis Wine | 13 Fryers Street Food Store
(Stockist of Shepparton Brewery Beers & GV Hazelnut products) |
| 3 Longleat Wines Murchison | 14 Chocolate Apple Factory |
| 4 Chas Cole Cellars
(stockist of Three Legged Cow Brewing Co) | 15 Eco Store |
| 5 Wild Life Brewing Co | 16 The Last Straw Café |
| 6 Shepparton Brewery | 17 Greendale Grove Olive & Produce Shop |
| 7 Avonlea Flowers | 18 Kaiela Arts |
| 8 Cheeky Grog Co | 19 SPC Factory Sales |
| 9 Higgins Bakery | |
| 10 Fiore's Bakery Cafe | |
| 11 Greater Shepparton Visitor Centre
(Stockist of local wine, beer, cider, preserves, SuperPop Popcorn and more) | |



Greater Shepparton Visitor Centre
530 Wyndham Street, Shepparton
Victoria Park Lake at the new SAM building
Open 9.00am to 5.00pm every day except Christmas Day.

1800 808 839
visitshepparton.com.au
info@visitshepparton.com.au



#visitshepparton
#stayclosegofurther



GREATER SHEPPARTON PRODUCERS & MAKERS

1 Belstack Strawberry Farm
7 days | 10am – 5pm (seasonally)
03 5823 1324
Pick your own and ready picked fresh organic strawberries, jams, seasonal produce, gifts and café.

2 Tallis Wine
Thursday to Sunday 11- 4pm
0437 825 547
Distinctive wines, warm hospitality, grazing platters & spectacular views. Online bookings essential.
www.talliswine.com.au/onlinebooking

3 Longleat Wines - Murchison
Saturday & Sunday 10am – 5pm
0421 602 520
Be treated to a tasting with the winemakers. Café specialising in cheese and antipasto plates showcasing seasonal local produce. Enjoy Longleat wine on the deck overlooking the vineyard and river red gums. Bookings essential via text.

4 Chas Cole Cellars
(stockist of Three Legged Cow Brewing Co)
Mon – Sat 9am – 9pm | Sunday 10am – 9pm
03 5481 1518
Three Legged Cow Brewing Co is a four-person artisan brewery, located on a family farm a few kilometres from Shepparton. For now you can find this gem at Chas Cole Shepparton and Fryers Street Foodstore.

5 Wild Life Brewing Co
Thursday – Saturday 2pm till late
0423 721 868
Wild Life Brewing Co keeps it simple - all about celebrating your best life, your Wild Life... So what are you waiting for, grab yourself a frosty six-pack and join the crew!

6 Shepparton Brewery
Thursday – 5pm – 10pm | Friday 12 – 10pm
Saturday 8am – 10pm | Sunday 8am – 3pm
15 Edward Street, Shepparton
03 5821 9776
Shepparton's very own brewery. Beers brewed on site. Brewpub offering wood-fired pizza, burgers, smoked and BBQ meats and delicious small plates. Local wines and other beverages are also available. "Our philosophy is being all about local... brewed local, by locals, for locals friends, family & nice people everywhere." Book online at.
www.sheppartonbrewery.com.au

7 Avonlea Flowers
Mon – Fri 10am – 9pm
Saturday 11am – 9pm | Sunday 11am – 5pm
03 5826 2406
Situated on the banks of the Goulburn River at Murchison is the beautiful Avonlea Flowers. Buy direct from the grower all year round. Online ordering and deliveries available to some areas.
www.avonleaflowers.com.au/

8 Cheeky Grog Co
Check website for current hours
5160 Shepparton-Barmah Rd, Bunbartha
1300 CHEEKY (1300 243 359)
Apple and Pear ciders from 100% home grown fruit. Pop out to Cheeky Grog Co and Cheeky Eats Co and enjoy both the cider and dining experience. Centred around local produce and seasonality, enjoy a relaxed atmosphere. Bookings essential, orders online.
www.cheekygrogco.com/

9 Higgins Bakery
6.30am – 6pm daily | 7am – 3pm Saturday
Closed Sunday
121 Wyndham Street, Shepparton
03 5821 2311
Bakers of artisan breads, bagels, croissants and traditional bakery products.

10 Fiore's Bakery Café
6am – 6pm Monday – Saturday
Closed Sunday
34 Vaughan Street, Shepparton
03 5831 2548
Fiore's bake European and traditional breads, cakes and pastry items, along with gelato and celebration cakes. Dine in for great coffee and café lunch.

11 Greater Shepparton Visitor Centre
9am – 5pm daily
530 Wyndham Street, Shepparton.
Victoria Park Lake at the new SAM building
03 5832 9330
The Visitor Centre gift shop stocks a range of local gifts and produce from the Goulburn Valley including wine, beer, cider, preserves, arts and crafts and more.

12 Boris's Fruit Shed
Farm Gate – Cherries & Stone Fruits
9am – 5.30pm daily (seasonally)
435 Midland Hwy, Shepparton East
Freshly picked produce grown locally; picked for sale fresh every morning to ensure the quality is above all else.

13 Fryers Street Food Store
(Stockist of Shepparton Brewery Beers & GV Hazelnut products)
Monday – Wednesday 7.30-5.00pm |
Thursday – Saturday 7.30-9.00pm Sunday
9.00 – 4pm Sunday 9.00 – 4pm
53 Fryers Street, Shepparton
03 5822 4660
A great range of local produce and beverages available, gift hampers, teas and cheeses. All this alongside heat & eat meals, grab and go take away, great coffee and relaxed dining options. Bookings available online.
www.thetellercollective.com/book-online-1

14 Chocolate Apple Factory
Check website for current hours
Thursday to Monday
7717 Goulburn Valley Highway, Kialla
03 5823 2416
Locally grown Pink Lady apples dipped in creamy caramel then coated in chocolate and decorated in an assortment of toppings. A Taste Sensation! The Chocolate Apple Factory also stocks a great range of chocolates, nuts, fruits and classic sweet treats for all ages.

15 Eco Store
9am – 3pm Monday to Friday
245 Wyndham Street, Shepparton
03 5831 6180
EcoStore is a retail outlet selling a variety of seasonal herbs and vegetables, sauces, chutneys, eggs and wooden and ceramic craft items. Come in and explore the many items that are on display and purchase your favourite produce.

16 The Last Straw Café
8am – 3pm Tuesday – Friday
9am – 2pm Saturday
24 Keppel Street, Shepparton
03 5822 4990
Traditional Thai food using fresh, locally produced ingredients. Open kitchen environment where customers and staff engage on a personal level, to experience the sights, smells and sounds of Thai culture. Each day 6 or 7 dishes are freshly prepared for the menu. Take-away service also available. Ba Yao's range of sauces, pastes, Chilli Jam and Oil, as well as Bean Around coffee roasted onsite.

17 Greendale Grove – Olive & Produce Shop
The shop is not open for set hours, for this reason if you are making a special trip please call for opening hours.
7230 Goulburn Valley Highway, Kialla West
03 5823 2785
Greendale Grove Olive Shop features gourmet foods made by their chefs from their own estate-grown olive oil and olives. Browse the range of unique olive body products and beautiful gift hampers available for purchase.

18 Kaiela Arts
10am – 5pm Tuesday – Friday
530 Wyndham Street, Shepparton. Victoria Park Lake at the new SAM building
03 5821 9842
Kaiela Arts is an Aboriginal art centre in Shepparton. Artworks reference the linear art style, traditional to Kaiela Dungalga (Goulburn Murray), Yorta Yorta Country. Kaiela Arts strengthens community by awaking culture, learning from the past and empowering future generations. The Gallery and shop is a point of sale for the work of local artists, providing them with a channel to market their work, connect with their buyers and earn income, providing locals and visitors with a place to acquire local Aboriginal art. All artwork is produced locally by members of the Dungalga Kaiela Aboriginal community and includes paintings, didgeridoos, woven baskets, woodwork, ceramics, clap sticks, boomerangs, jewellery, carved emu eggs and poker work and well as books, cards and textiles.
Please Note:
We endeavour to keep this information as accurate as possible but some information may vary. All due care has been taken in producing this document. The Greater Shepparton City Council does not accept liability for any personal injury and/or damage to property and no responsibility for the results of any actions taken on the basis of information in this publication or for any errors or omissions.

19 SPC Factory Sales
9am – 6pm Monday – Friday
9am – 5pm Saturday – Sunday
(excludes some public holidays)
197-205 Corio Street, Shepparton
03 5821 7033
Along with SPC favourites, SPC Factory Sales stock top Australian brands with 20-70% off normal retail prices. Modern state of the art outlet with colour and atmosphere. Large car parking and ground level access to all amenities. Air conditioned premises Credit Card & EFTPOS facilities.



Greater Shepparton Visitor Centre
530 Wyndham Street, Shepparton
Victoria Park Lake at the new SAM building
Open 9.00am to 5.00pm every day except Christmas Day.

1800 808 839
visitshepparton.com.au
info@visitshepparton.com.au



Follow us on
Instagram

#visitshepparton
#stayclosegofurther



Find us on
Facebook